



# TOASTMASTERS BINGO

## FACILITATOR GUIDE



# Toastmasters Bingo

## Introduction

The purpose of this activity is to encourage participants to meet, connect and build stronger relationships with peers. This activity can be used as an ice breaker in a variety of settings.

## Overview

In this training module, participants make connections with fellow Toastmasters.

## Objectives

After completing this session, participants will be able to do the following:

- Interact and build stronger relationships with peers

By meeting this objective, members lay the foundation for a successful, support system to consult during their Toastmasters journeys.

## Materials

- PowerPoint
- Bingo cards (see Appendix)
  - For your preparation purposes, please note that the PDF format of the Toastmasters Bingo Card is editable. You may replace any of the provided characteristics with a characteristic that better relates to your audience members.

## Setting

- Large room in which participants can get up and interact with one another

## Group size

- More than 10 people

## Time

- Approximately 15 minutes

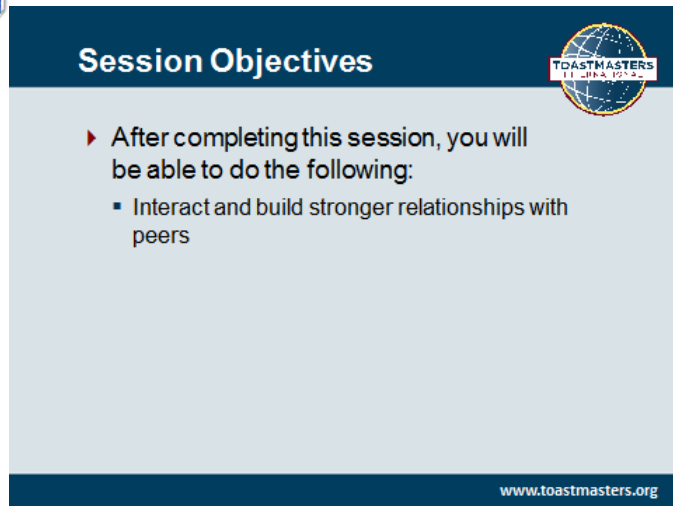
# Introduction



1. SHOW the Introduction slide as participants enter the room.



2. SHOW the Session Objectives slide.



3. PRESENT the session objectives:
  - After completing this session, you will be able to do the following:
    - Interact and build stronger relationships with peers

# Toastmasters Bingo

(15 minutes)

## NOTE TO FACILITATOR

In this activity, members introduce themselves to people they have never met. The first three members to shout BINGO are the winners. Record their names, but encourage everyone to continue playing to take advantage of this networking opportunity. Call the three winners to the front of the room and announce the names listed in their winning bingo row. You are encouraged to ask those members named to stand or raise their hands for everyone to recognize.

1. SHOW the Toastmasters Bingo Card slide.

2. PRESENT

- During this activity, you will move around the room and find other members who meet the criteria on your bingo card.
- In the corresponding block on your bingo card, write the full name of the member and/or the club number that meets the criteria.
- This is a great opportunity to network and interact with as many of your peers as time permits. Only list one name per block.
- Shout “BINGO” when you have completed an entire row vertically, horizontally or diagonally.
- The first three winners will announce the names and club numbers they wrote in each block of the winning bingo row.

3. DISTRIBUTE the Toastmasters Bingo cards to each member.

10 minutes



4. INSTRUCT members to spend 10 minutes completing the Toastmasters Bingo card.
5. TIME 10 minutes.
6. INSTRUCT the three winners to come to the front of the room.
7. INSTRUCT winners to read aloud the names listed on their bingo cards.
8. INSTRUCT members whose names are announced to briefly stand or raise their hand to be recognized.
9. INSTRUCT all three winners to go back to their seats.



### Review: Toastmasters Bingo

1. PRESENT
  - You strengthen your relationships by interacting with your peers.
  - The Toastmasters Bingo Card is a great conversation starter.
  - You are encouraged to continue the conversation and build on the connections you made today.

# Conclusion

1. SHOW the Conclusion slide.



2. PRESENT

- By making connections with other Toastmasters, you create a support system you can turn to throughout your Toastmasters journey.





# Toastmasters Bingo

**B**

**I**

**N**

**G**

**O**

**1**

**2**

**3**

**4**

**5**

**Free space**